

COMBI WASHERS & DOME PLATE

For Split Set / Friction Bolt
Black, Hot Dipped Galvanized & Zinc Electroplated Coating.

COMBI WASHER

DOG EAR DESIGN



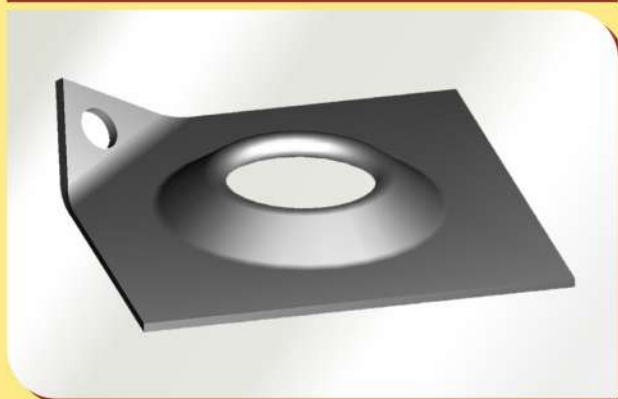
INVERTED 'V' DESIGN



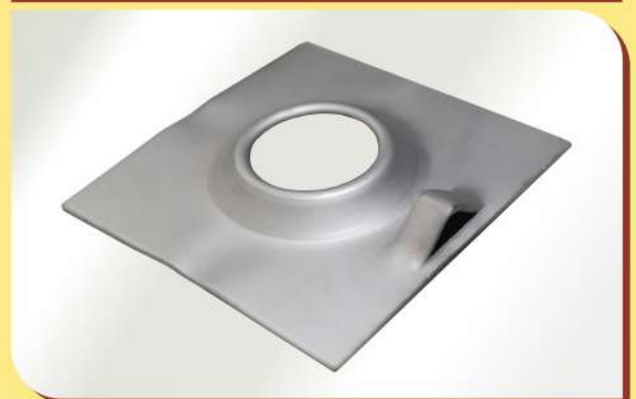
Size : 300 x 285 x 1.6mm
Fitted with 150 x 150 x 4mm or 125 x 125 x 4mm plate

DOMED BEARING PLATE

DOG EAR DESIGN



INVERTED 'V' DESIGN



Size : 150 x 150 x 4mm or 125 x 125 x 4mm plate



DAMAN PIPE

Works : Plot No. 41, Indl. Area, Phase 9, Mohali-160062, Punjab. INDIA.
Mobile : +91-78378-11191, Telefax : +91-172-5094744
e-mail : sales@damanpipe.com Website : www.damanpipe.com