

# COMBI WASHERS & DOME PLATE

For Split Set / Friction Bolt  
Black, Hot Dipped Galvanized & Zinc Electroplated Coating.

## COMBI WASHER

**DOG EAR DESIGN**



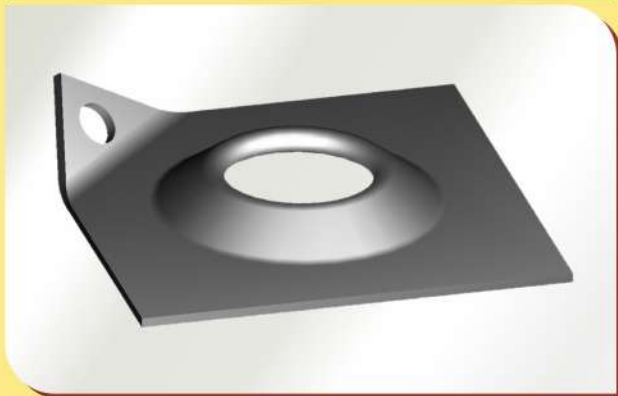
**INVERTED 'V' DESIGN**



Size : 300 x 285 x 1.6mm  
Fitted with 150 x 150 x 4mm or 125 x 125 x 4mm plate

## DOMED BEARING PLATE

**DOG EAR DESIGN**



**INVERTED 'V' DESIGN**



Size : 150 x 150 x 4mm or 125 x 125 x 4mm plate