

Two silver, cylindrical split set friction bolts are shown at an angle, one in front of the other, highlighting their tapered ends.

SPLIT SET FRICTION BOLT

Daman Pipe is manufacturer and exporter of Split Set / Friction Bolt along with Combi Washer / Domed Bearing Plate required for underground mining and civil engineering projects.

Split Sets / Friction Bolts have been used as a primary roof support in the underground mining environment for many years. The Split Set consists of an open seam high tensile steel tube. One end is tapered for easy insertion into a pre-drilled hole. It is installed by driving the assembly into a marginally smaller hole than the split sets diameter. The welded steel ring provides the necessary support to hold the washer plate in place. The split set uses friction to anchor itself along the whole length of the bolt by relying on the radial spring force generated through compression of the tube. Split set technology is used worldwide by many mines for an extensive variety of mining applications.



Key Advantages of using

Split Sets

- **Fast and easy installation**
- **Full length support**
- **Effective support at any angle**
- **Axial and radial support**
- **No torquing or re-torquing**
- **No special equipment is required**
- **Improved rock stability**

SPLIT SET FRICTION BOLT

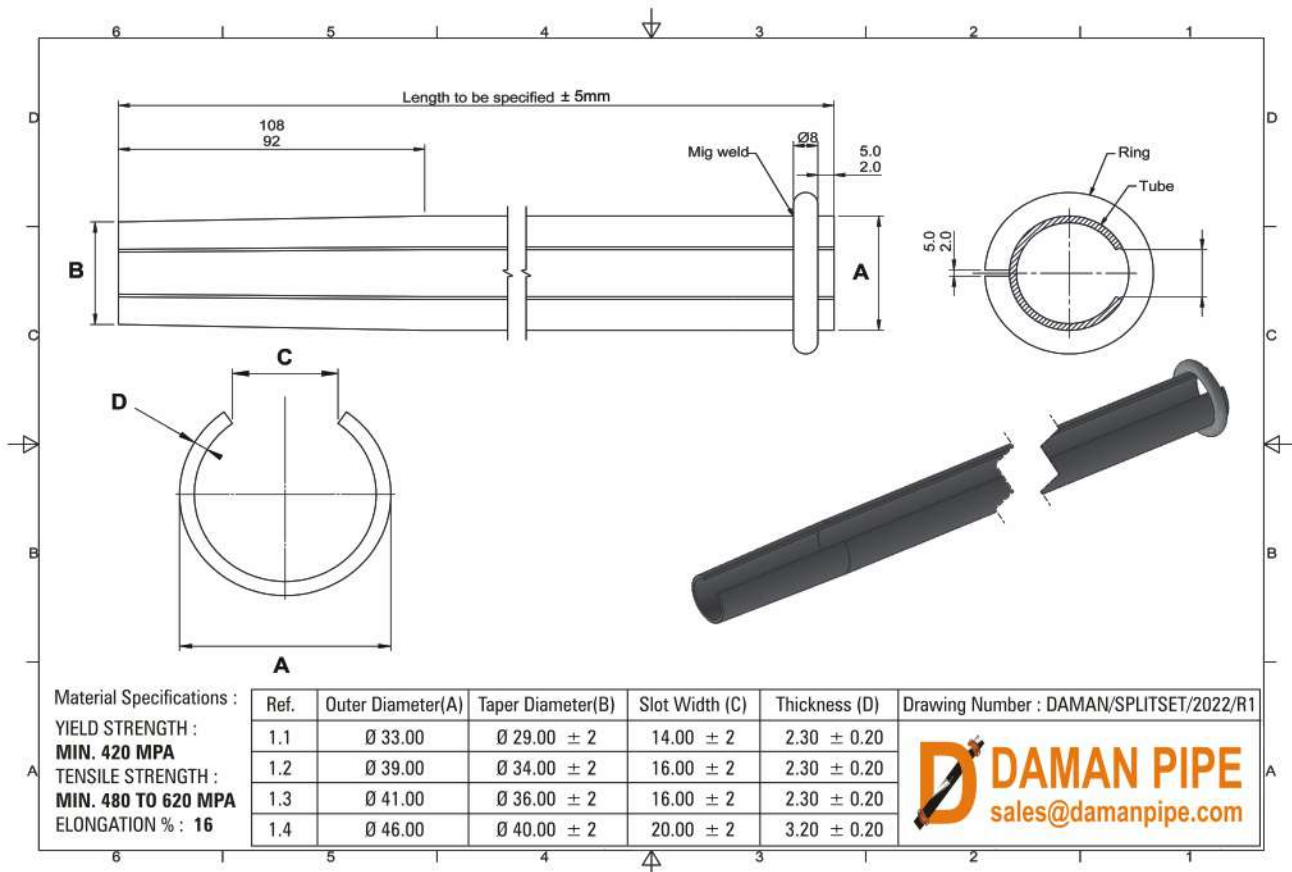
SIZES AVAILABLE

Split Set / Friction Bolts are available in 33mm, 39mm, 41mm and 46mm diameters in a variety of lengths to suit the application of the mine. The domed bearing washer plates are available in sizes 125 x 125 x 4mm and 150 x 150 x 4mm as well as the Combi Washer Plates are available in 300 x 285 x 1.6mm along with 125 x 125 x 4mm or 150 x 150 x 4mm pressed on it.

EASY INSTALLATION

The Split Set / Friction Bolt is a popular choice due to its easy installation. Once the hole is drilled, the driver tool drives the anchor into the wall. Installation time is typically less than a minute and there is no waiting time for grout to set, no tightening or torquing and no ongoing maintenance is needed after installation. This saves time, labour and additional grouting or resin expenses.

Custom specifications are available as per orders.



SPLIT SET FRICTION BOLT



MATERIAL SPECIFICATIONS

Mechanical Tests are performed by Independent NABL Approved laboratory conducted on our manufactured Split Set / Friction Bolts to confirm the product specification and to offer complete transparency to the client. Clients can rely upon the standard, consistency and quality of our split set units as supported by these ongoing tests.

PACKAGING

Split Sets / Friction Bolts are packed in rectangular shape with quality packaging fitted with metal straps designed to withstand the rigours of transport by road and sea. This ensures damage is eliminated or kept to an absolute minimum during transport.



SPLIT SET MATERIAL SPECIFICATION

Yield Strength (Min)	420 MPA
Tensile Strength (Min)	480 to 650 MPA
Elongation %	16

E-mail : sales@damanpipe.com, Contact : +91 7837811191

COMBI WASHERS & DOME PLATE

For Split Set / Friction Bolt
Black, Hot Dipped Galvanized & Zinc Electroplated Coating.

COMBI WASHER

DOG EAR DESIGN



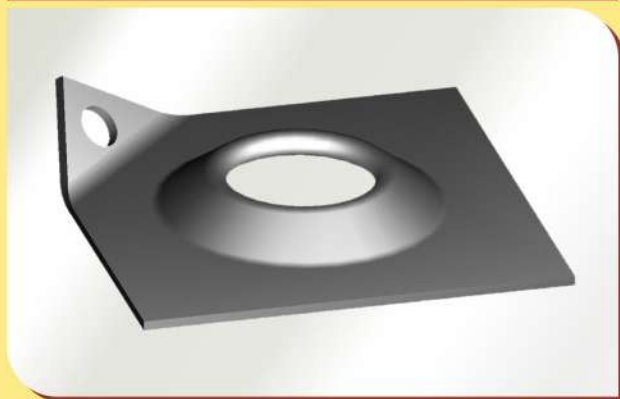
INVERTED 'V' DESIGN



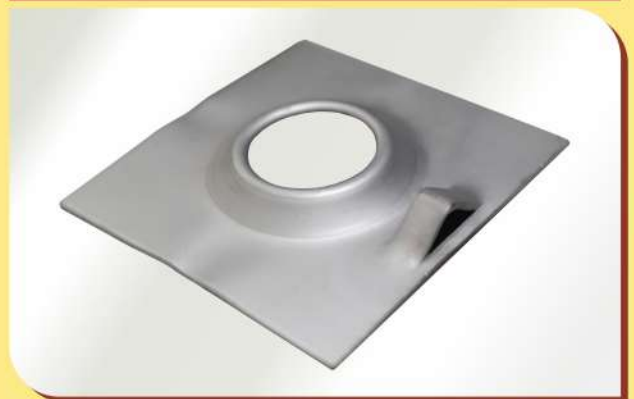
Size : 300 x 285 x 1.6mm
Fitted with 150 x 150 x 4mm or 125 x 125 x 4mm plate

DOMED BEARING PLATE

DOG EAR DESIGN



INVERTED 'V' DESIGN



Size : 150 x 150 x 4mm or 125 x 125 x 4mm plate